

„SOLEA“
Cruise 738
REPORT
18.08. – 04.09.2017

Personnel

Name	Institution
Kay Panten	SF
Colin Buster-Mensah	SF
David Hofmann	SF
Thomas Kehlert	SF
Karin Krüger	SF
Dimitri Schuschkow	SF

Objectives

1. Participation in the ICES co-ordinated "International **B**eam **T**rawl **S**urvey" in the North Sea
2. Determination of temperature and salinity in the area of investigation

Narrative (Fig. 1)

FRV "Solea" left the port of Cuxhaven in the afternoon on 18th August. Working started the next day by sampling the ICES statistical rectangle 39F7. Due to strong wind, the fishing had to be stopped from noon until the next evening. On the following four days nine rectangles could be processed in the south-western part of the study area. A technical defect forced on 25th August a repair stay in the port of Esbjerg. From 26th to 29th August further 10 rectangles were processed. Then a second repair stay in Esbjerg was necessary. The remaining four rectangles between Jammerbucht and Limfjord were fished from 31st August until 2nd September. The work in the FFH area "Sylter Außenriff" was carried out on 3rd September. Due to a medical emergency in the family of a member of the scientific

crew, the trip was already finished on the morning of 04th September in Cuxhaven. The return trip to Hamburg took place the same day.

Results (Fig. 2 – 8)

A total of 71 valid hauls with a standard duration of 30 minutes were conducted with the 7m beam trawl. At 66 stations salinity and temperature were measured.

The distribution of species composition shows the usual geographic pattern with dab as the most frequent fish species, followed by plaice, grey gurnard and lemon sole.

Towards the North of the investigation area the importance of dab in the biomass decreases. Here, plaice is only occurring sporadically with some larger (up to 50 cm) individuals.



Dipl.-Biol. K. Panten

Catch composition in kg and length distribution during Beam Trawl Survey

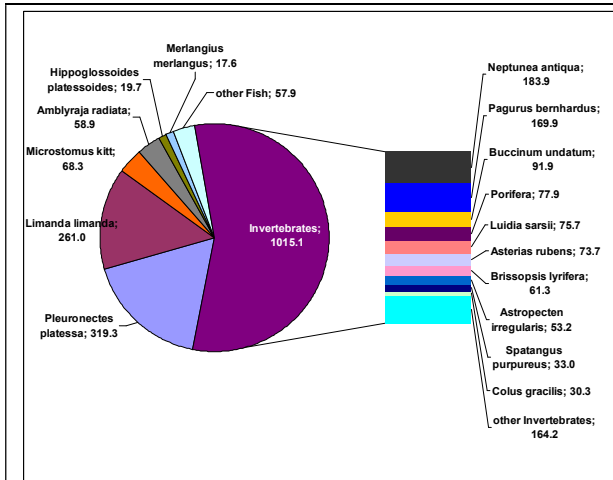


Fig. 2: Catch composition in 39-43F4&5 (offshore)

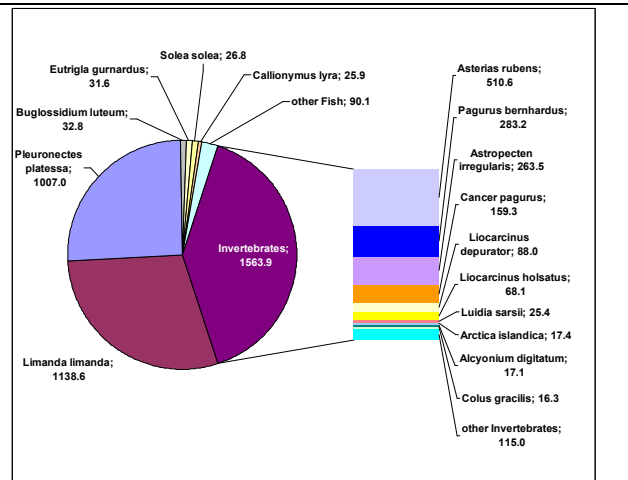


Fig. 3: Catch composition in 39-43F6&7, 43F8&9 (inshore)

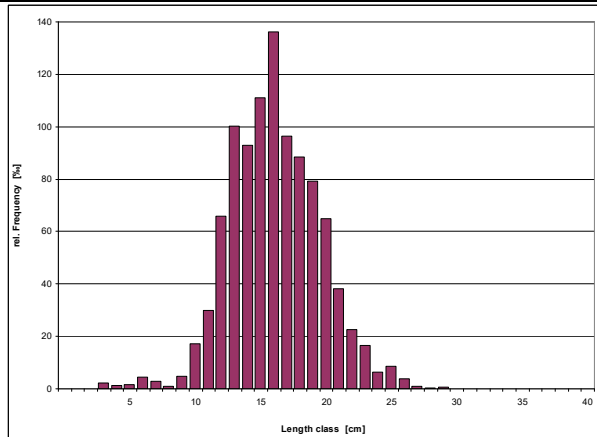


Fig. 4: Length distribution of Dab in 39-43F4&5

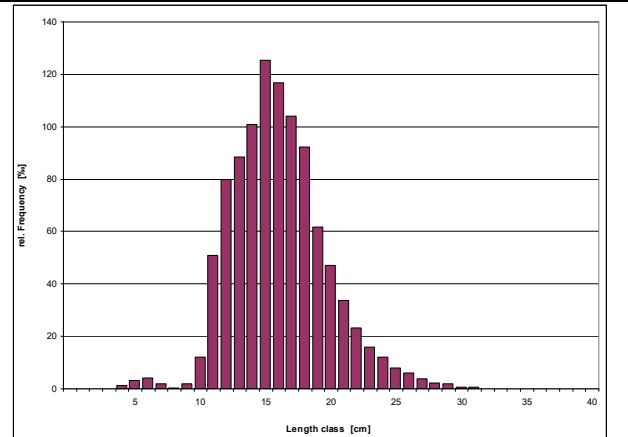


Fig. 5: Length distribution of Dab in 39-43F6&7, 43F8&9

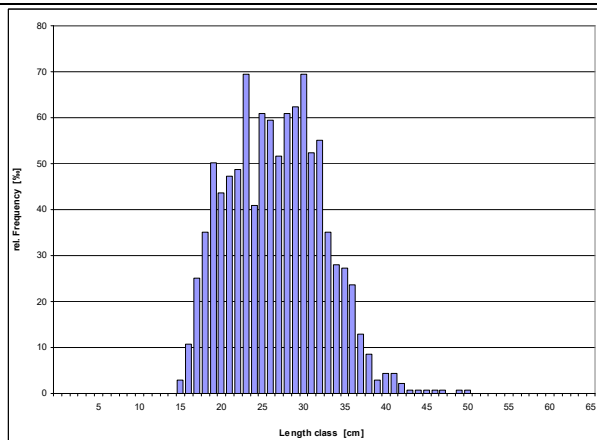


Fig. 6: Length distribution of Plaice in 39-43F4&5

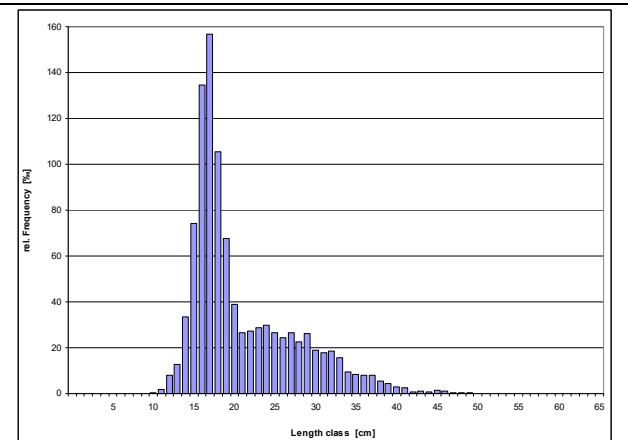


Fig. 7: Length distribution of Plaice in 39-43F6&7, 43F8&9

Catch composition and length distribution during FFH Monitoring

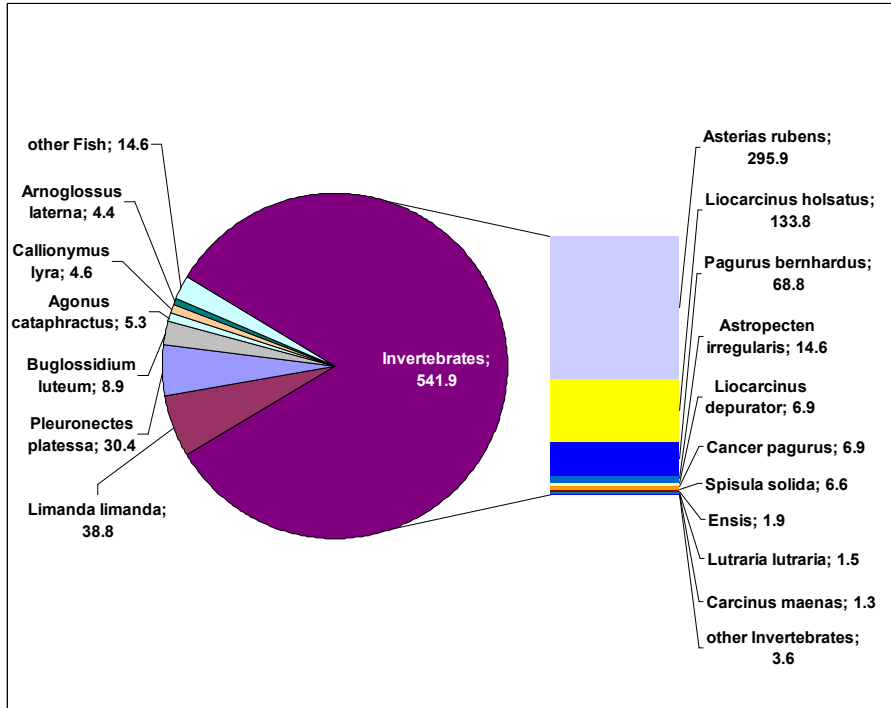


Fig. 8: Catch composition in FFH-Area „Sylter Aussenriff“