

4. ATTACH CHART showing (on an appropriate scale) the geographical area of intended work, positions of intended stations, tracks of survey lines, positions of moored/seabed equipment, areas to be fished

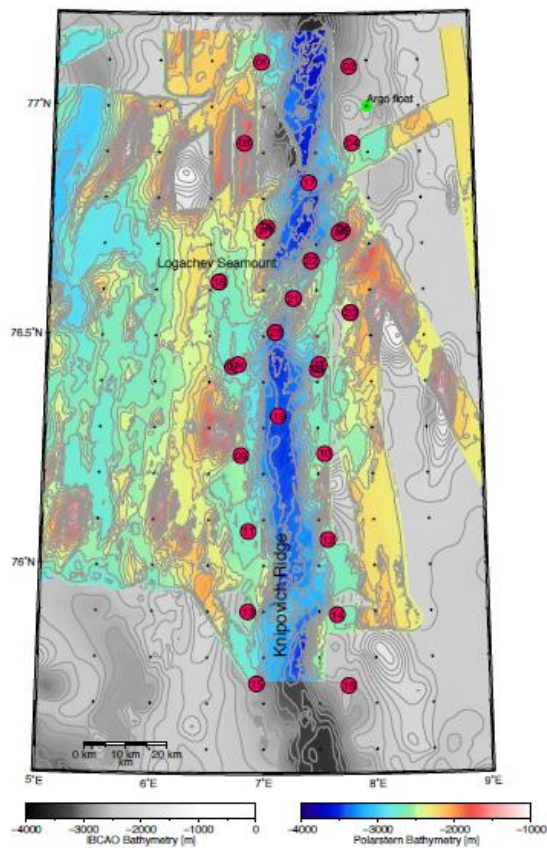


Fig. 1
Position of ocean
bottom
seismometers to
be recovered by
MSM68.
Bathymetric
surveying will
focus on closing
gaps in Polarstern
high resolution
bathymetry
(coloured).