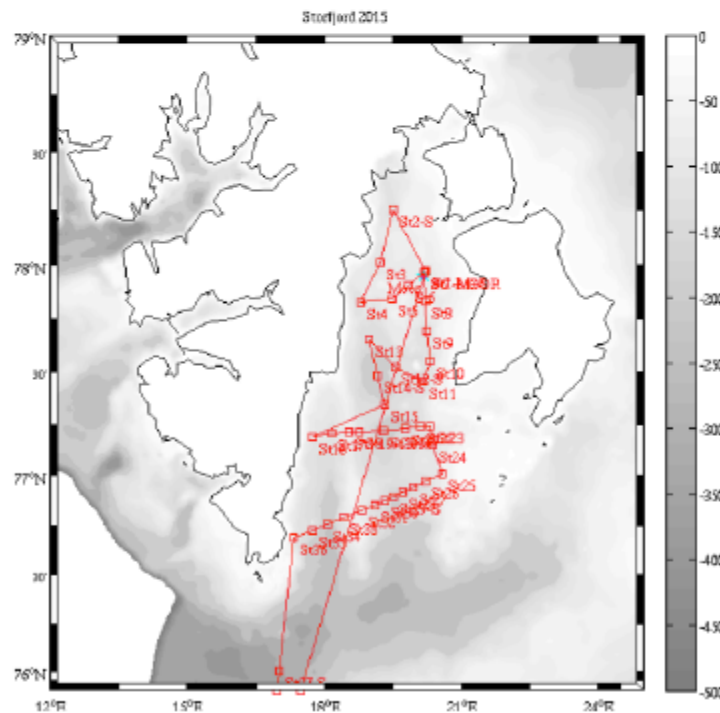


ADCP + CTD + SCAMP	77°14.44'	20°7.01'	
ADCP + CTD + SCAMP	77°14.66'	20°19.81'	106
ADCP + CTD + SCAMP	77°9.07'	20°22.47'	
ADCP + CTD + SCAMP	77°0.42'	20°35.67'	70
ADCP + CTD + SCAMP	76°58.24'	20°13.60'	111
ADCP + CTD + SCAMP	76°56.56'	19°58.29'	127
ADCP + CTD + SCAMP	76°55.22'	19°43.65'	149
ADCP + CTD + SCAMP	76°53.87'	19°30.36'	150
2 multicore casts	76°53.87'	19°30.36'	150
multinet cast	76°53.87'	19°30.36'	150
ADCP+SCAMP+CTD	76°52.53'	19°20.45'	136
ADCP+SCAMP+CTD	76°51.35'	19°7.17'	108
ADCP+SCAMP+CTD	76°49.84'	18°50.50'	80
ADCP+SCAMP+CTD	76°47.63'	18°26.01'	83
ADCP+SCAMP+CTD	76°45.53'	18°4.48'	193
ADCP+SCAMP+CTD	76°43.77'	17°44.65'	
ADCP+SCAMP+CTD	76°41.45'	17°20.50'	
ADCP+SCAMP+CTD	76°0.00'	17°0.00'	
2 multicore casts	76°0.00'	17°0.00'	
multinet cast	76°0.00'	17°0.00'	
kullenberg coring	76°0.00'	17°0.00'	



Annexer une (des) carte(s) à une échelle appropriée montrant les zones géographiques du travail proposé et, autant que possible, la position des stations prévues, le tracé des profils et la localisation des mouillages et observatoires éventuels (préciser la durée)  
*Attach chart(s) at an appropriate scale showing the geographical areas of the intended work and, if possible, the positions of intended stations, the line tracks and locations of moorings and possible observatories (indicate the duration)*