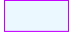
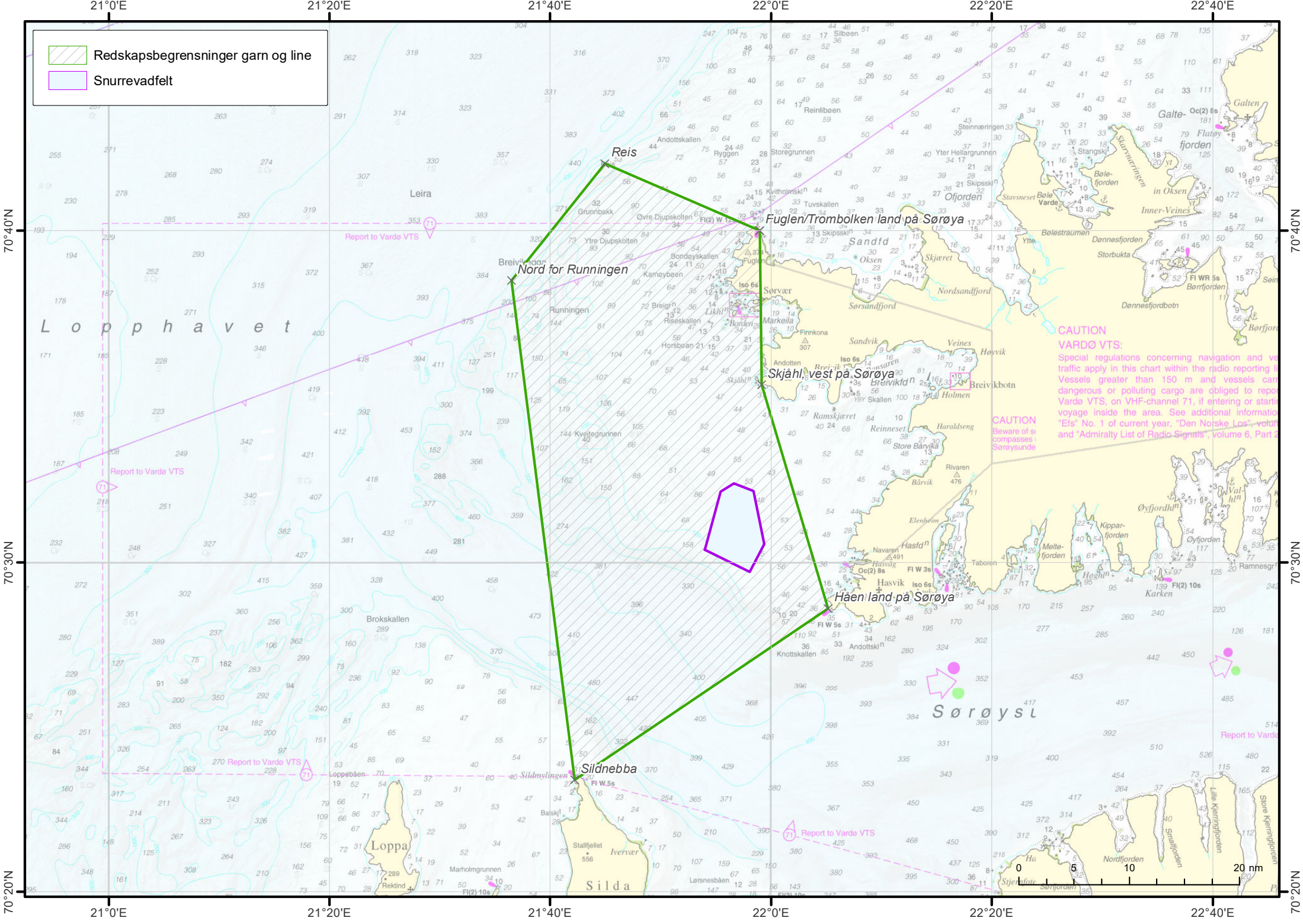
 Redskapsbegrensninger garn og line
 Snurrevadfelt



CAUTION
VARDØ VTS:
 Special regulations concerning navigation and vessel traffic apply in this chart within the radio reporting line. Vessels greater than 150 m and vessels carrying dangerous or polluting cargo are obliged to report Vardø VTS, on VHF-channel 71, if entering or starting voyage inside the area. See additional information "Eis" No. 1 of current year, "Den Norske Løst" vort and "Admiralty List of Radio Signals", volume 6, Part 2.

CAUTION
 Beware of ice compasses in Sørøysundet

Sørøyslet

20 nm