

**„SOLEA“**  
**Cruise 839**  
**REPORT**  
**16.08. – 03.09.2024**

**Personnel**

Name	Institution
Kay Panten	SF
Arno Beitelmann	SFA
Marsha Dechant	SF
Lizzy Draudt	SF
Svea Erichsen	SF
Lennard Grassmeier	SF
Karin Krüger	SF

**Objectives**

1. Participation in the ICES co-ordinated “International **Beam Trawl Survey**” in the North Sea
2. Determination of temperature and salinity in the area of investigation

**Narrative (Fig. 1)**

The vessel left Cuxhaven as planned in the afternoon of 19 August. The next day, several hauls were made west of Helgoland to collect samples for the Institute of Fisheries Ecology. On the following two days, the southern stations were fished from west to east, before Esbjerg was used as a shelter for a week due to a prolonged period of high winds in the BTS survey area. After leaving the harbour on the evening of 26 August, the remaining survey area was successfully fished by reducing the number of hauls to two in the inshore rectangles. The Dogger Bank FFH site could not be investigated. The cruise ended in Cuxhaven on the morning of 3 September. The scientific participants returned to Bremerhaven in the early afternoon.

**Results (Fig. 2 – 9)**

A total of 46 valid hauls with a standard duration of 30 minutes were conducted with the 7m beam trawl. At 46 stations salinity and temperature were measured.

The distribution of species composition shows the usual geographic pattern with plaice as the most frequent fish species, followed by dab and lemon sole (offshore) or solenette (inshore).

Toward the north and the west soon the importance of long rough dab and starry ray in the biomass increases. Still, in the survey area some larger (up to 50 cm) plaice can be found, although quite sporadically.

Unusual this year was the strong presence of haddock and whiting in the beam trawl catches throughout the survey area.



Dipl.-Biol. K. Panten

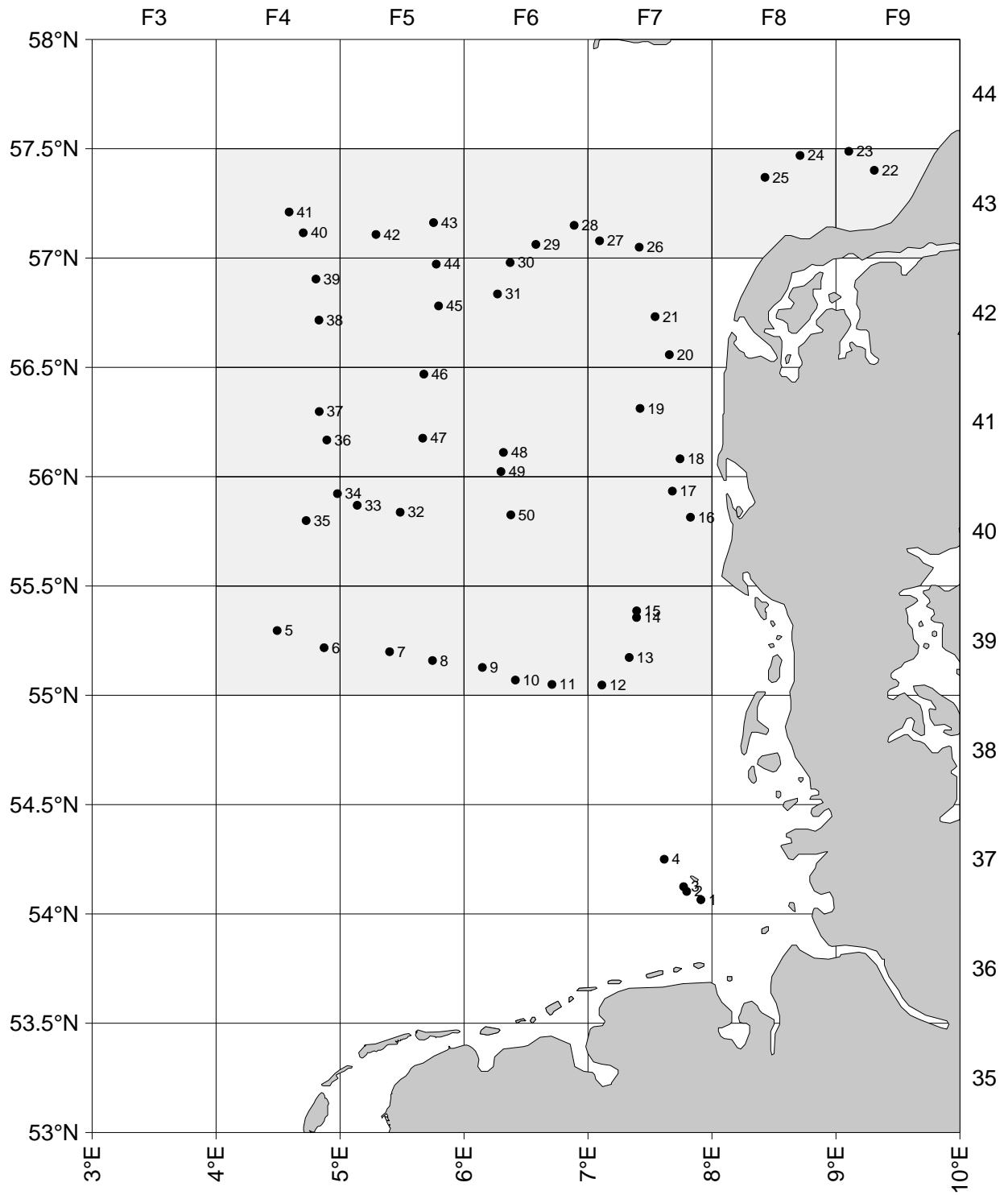
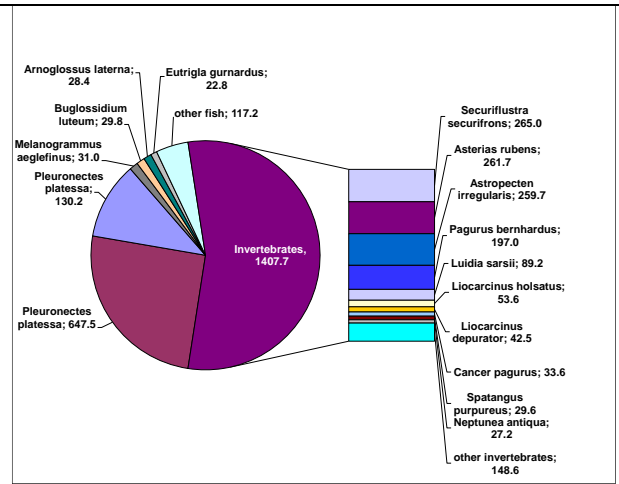
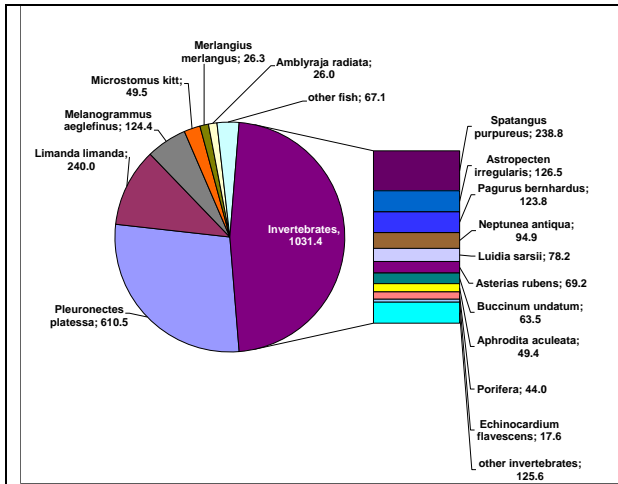


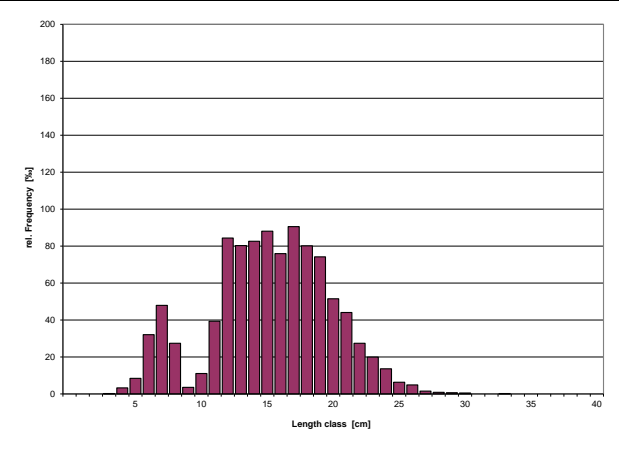
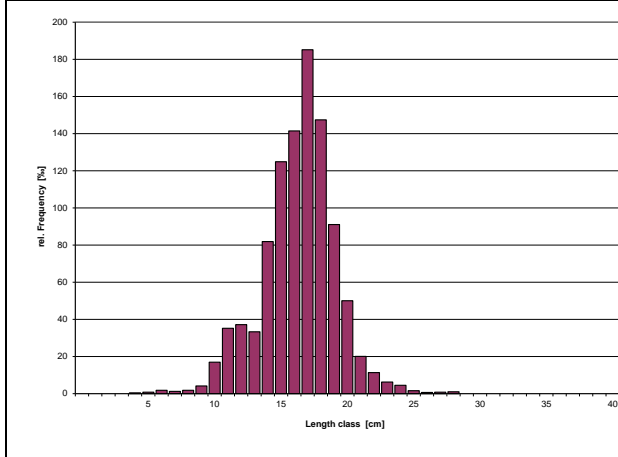
Fig. 1: "Solea", Cruise 839, Haul positions and area of investigation

## Catch composition in kg and length distribution during Beam Trawl Survey



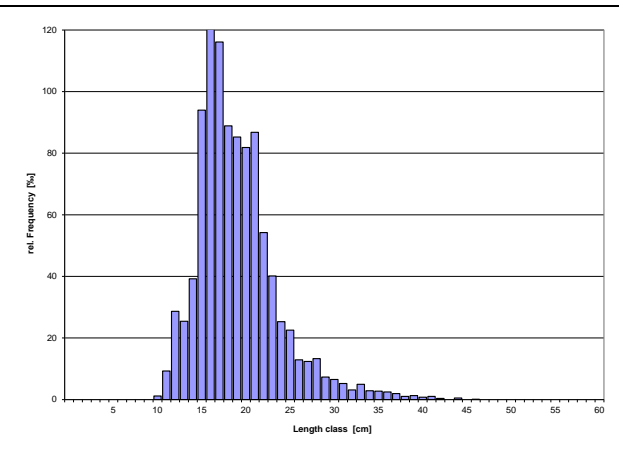
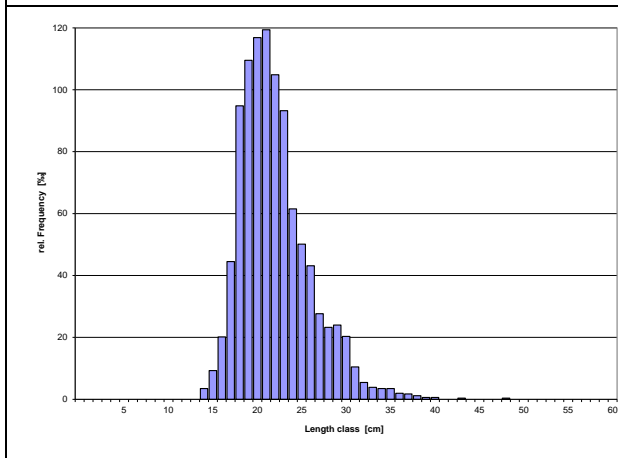
**Fig. 2: Catch composition in 39-43F4&5 (offshore)**

**Fig. 3: Catch composition in 39-43F6&7, 43F8&9 (inshore)**



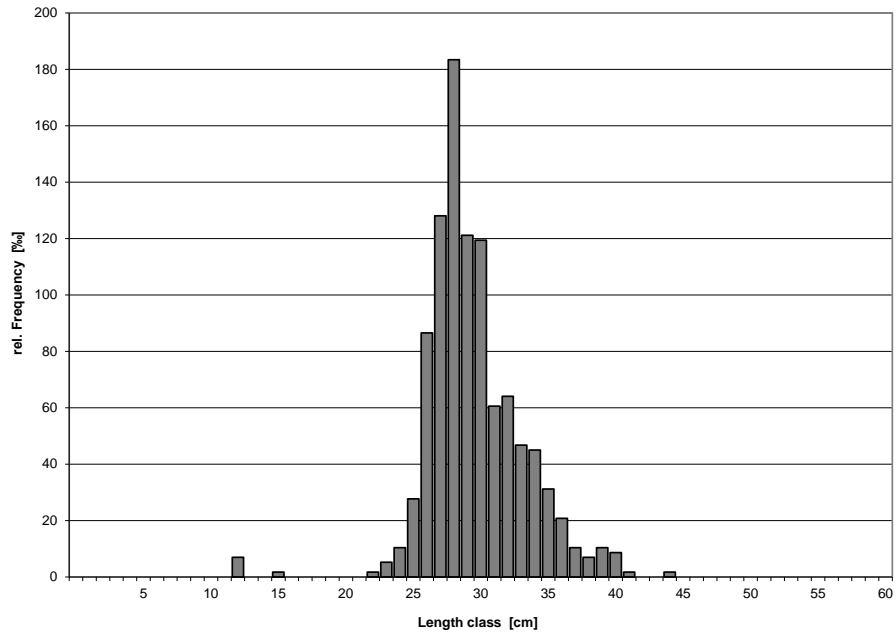
**Fig. 4: Length distribution of Dab in 39-40F4&5**

**Fig. 5: Length distribution of Dab in 39-40F6&7, 43F8&9**

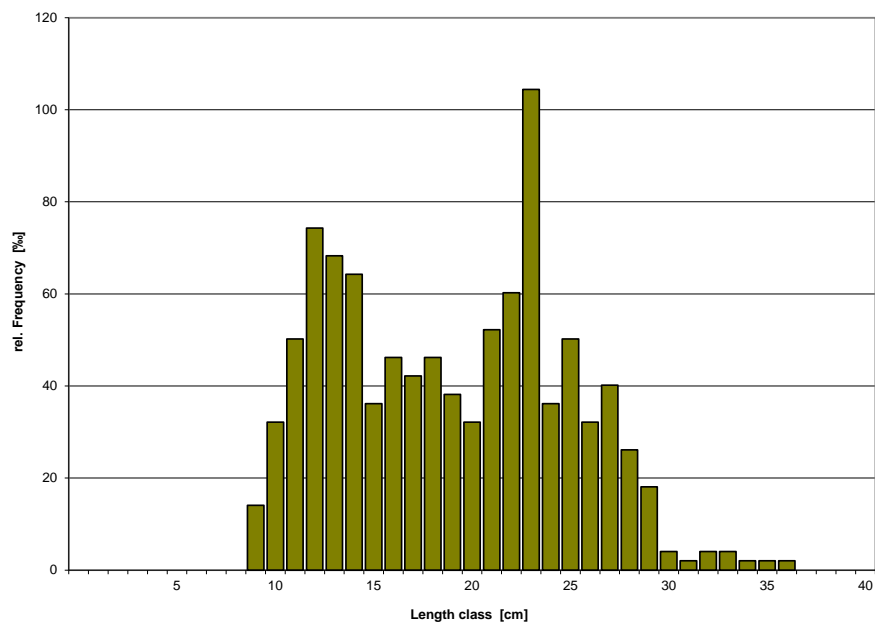


**Fig. 6: Length distribution of Plaice in 39-40F4&5**

**Fig. 7: Length distribution of Plaice in 39-40F6&7, 43F8&9**



**Fig. 8: Length distribution of Haddock in the whole study area**



**Fig. 9: Length distribution of Whiting in the whole study area**